

# E3 - Gravida - Past Obstetric History

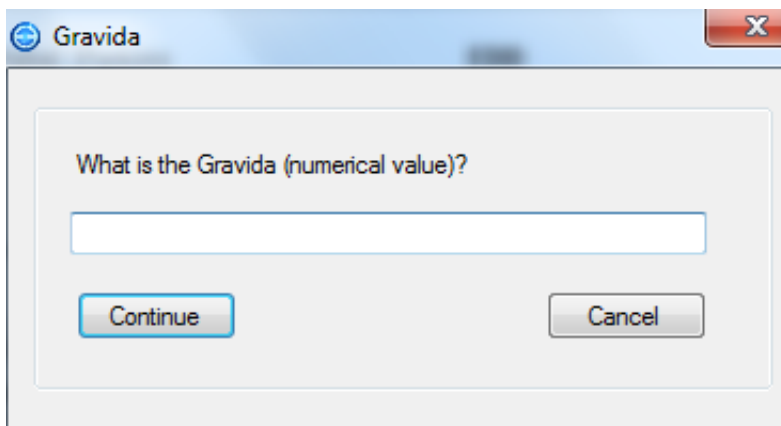
## E3 Maternity System

### Gravida - Past Obstetric History

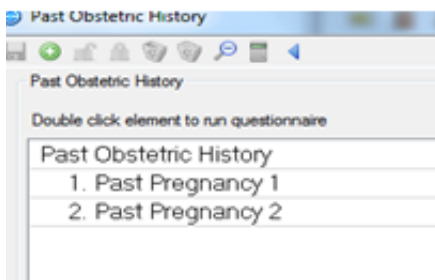
Past obstetric history is not entered from the questionnaires: it is entered from the banner. Until information is entered it will always display Gravida?

Registered Born 25-Jul-1999 Age 18 Year(s) [Gravida : ?](#)

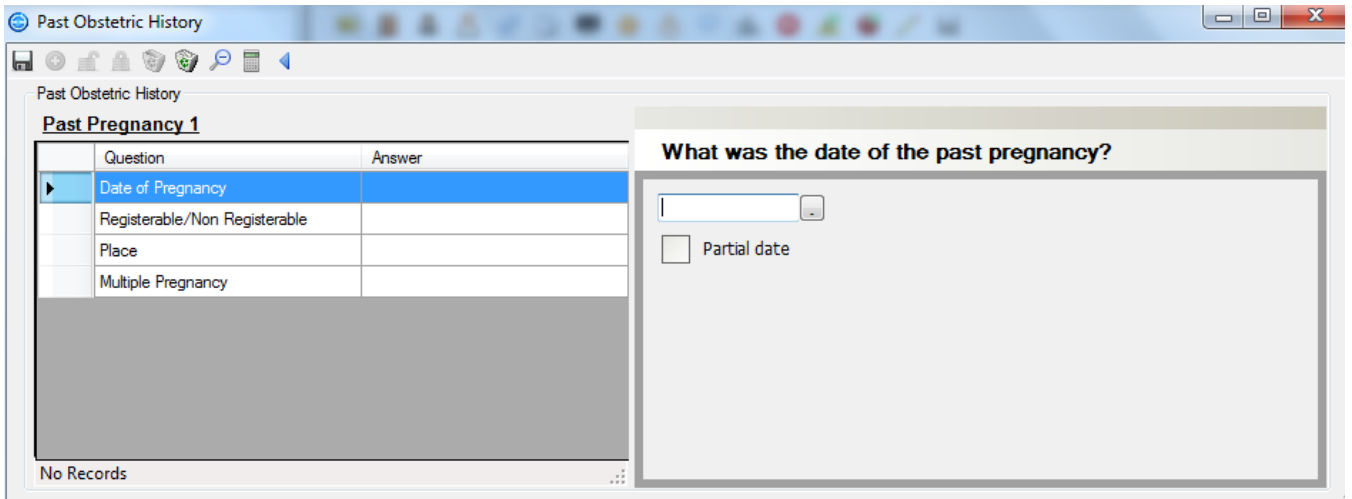
To enter past obstetric history click on the gravida on the banner and enter the number of pregnancies and click on continue.



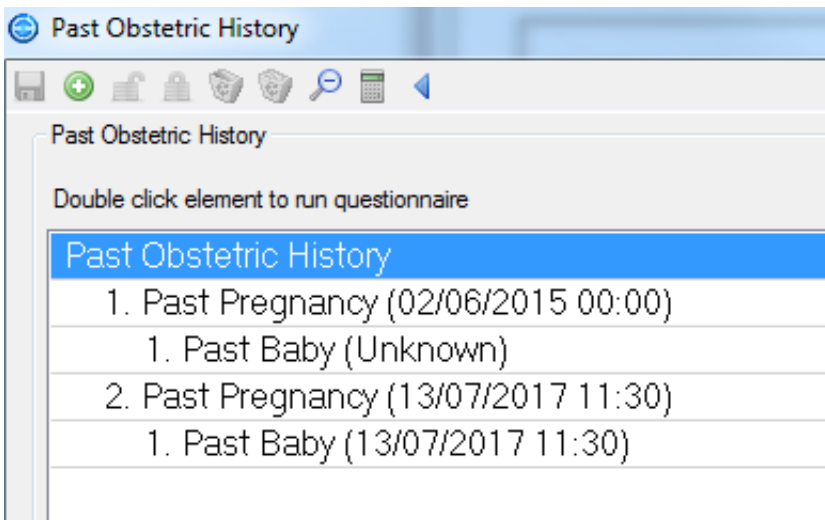
This will display the Past Obstetric History box showing the number of past pregnancies you will need to complete.



Double click the past pregnancy you want to update this will open the past pregnancy questionnaire.



When completing the past obstetric history, you must complete and save the past pregnancy details first. You will then need to complete the past baby questionnaire. The data (date/time) appears to repeat itself however this is so E3 can match a pregnancy to a baby.



If you wish to view the past pregnancies that have been entered click on the calculate gravida/parity button.

The screenshot shows a software interface with a 'Past Obstetric History' window and a 'Past Obstetric History Summary' window. The 'Past Obstetric History' window contains a list of pregnancy events:

- 1. Non registerable Partial date->2015
- 2. Past Pregnancy 1
- 3. Registerable 01/04/2016
  - 1. Livebirth 01/04/2016 13:00
  - 2. Livebirth 01/04/2016 13:20
- 4. Registerable 01/04/2016
  - 1. Neonatal death 01/04/2016 01:00
  - 2. Stillbirth 01/04/2016 01:06

The 'Past Obstetric History Summary' window displays the following data:

Previous Pregnancies	0
Gravida	5
Parity	4 + 1
Livebirths	2
Miscariages	0
Missed Miscariages	0
Neonatal Deaths	1
Stillbirths	1
Termination of Pregnancy	1
Ectopics	0
Molar Pregnancy	0

If you need to mark the pregnancy as confidential highlight the pregnancy and click on the confidential pregnancy icon a lock will appear alongside the pregnancy.

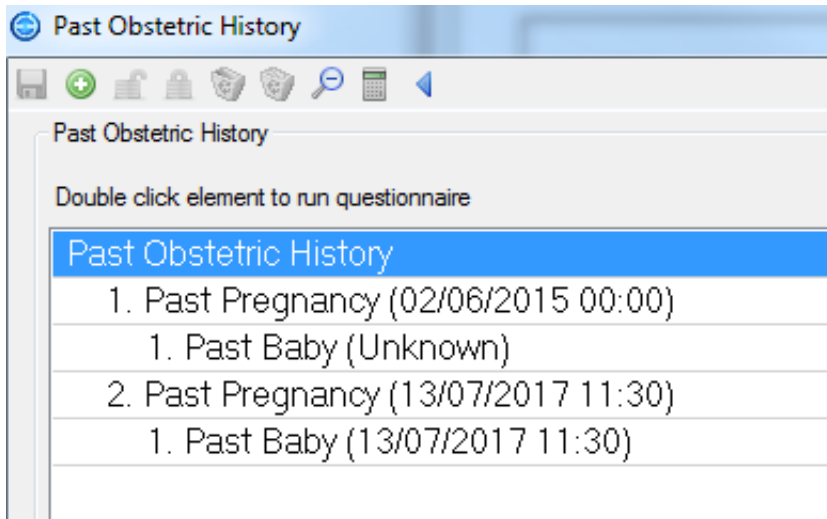
This screenshot shows the 'Past Obstetric History' window with the second item, '2. Past Pregnancy 1', highlighted in blue and accompanied by a lock icon, indicating it is confidential.

If a pregnancy has been locked you will only be able to view this pregnancy if you have the relevant access to do so.

When birth details are added to the past obstetrics history as a still birth or neonatal death a Sands information box will become visible in the report viewer on the patient record.



If an additional pregnancy needs to be entered into the past obstetric history click on the green + button and add the pregnancy.



Online URL: <https://elearning.cornwall.nhs.uk/site/kb/article.php?id=64>